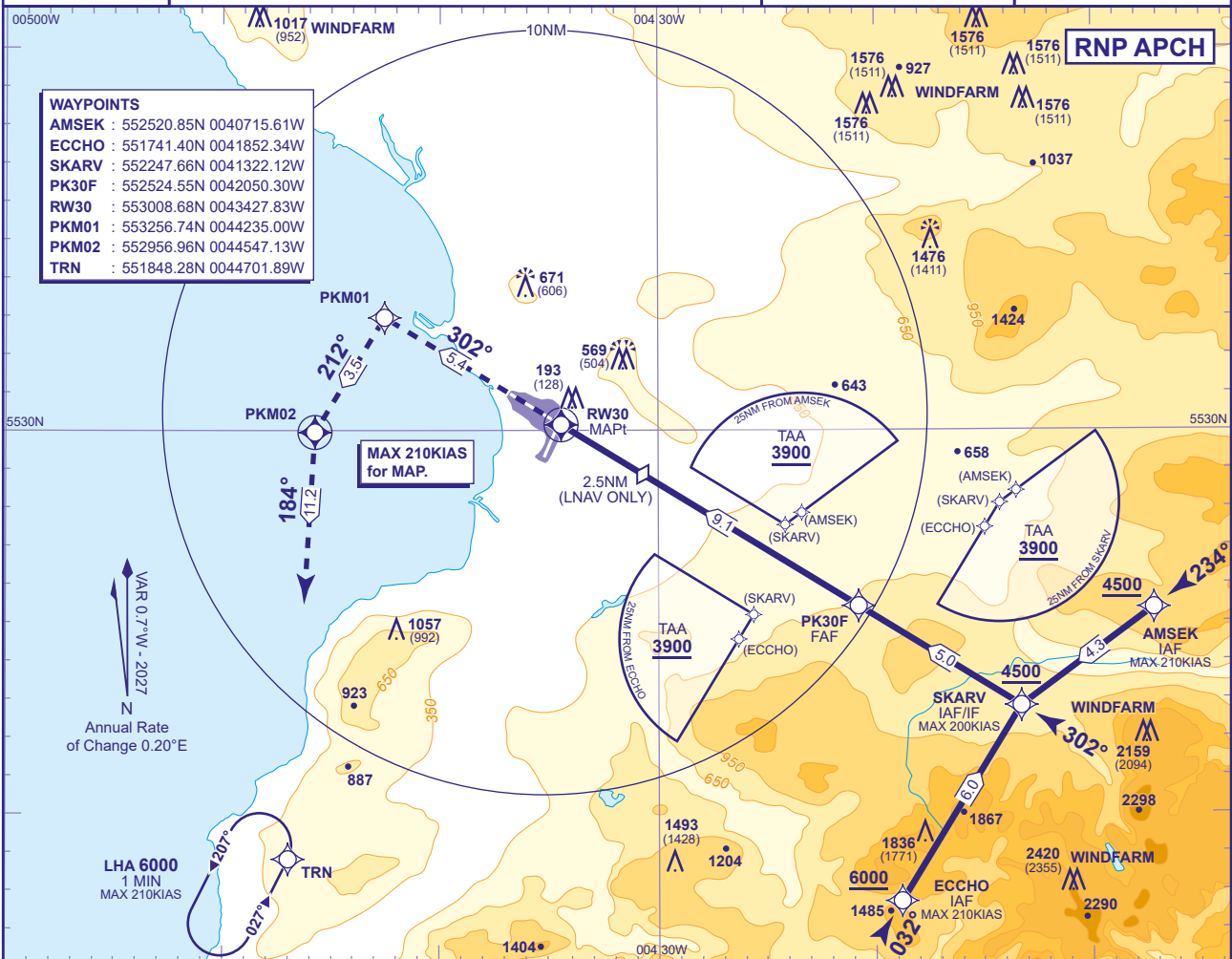


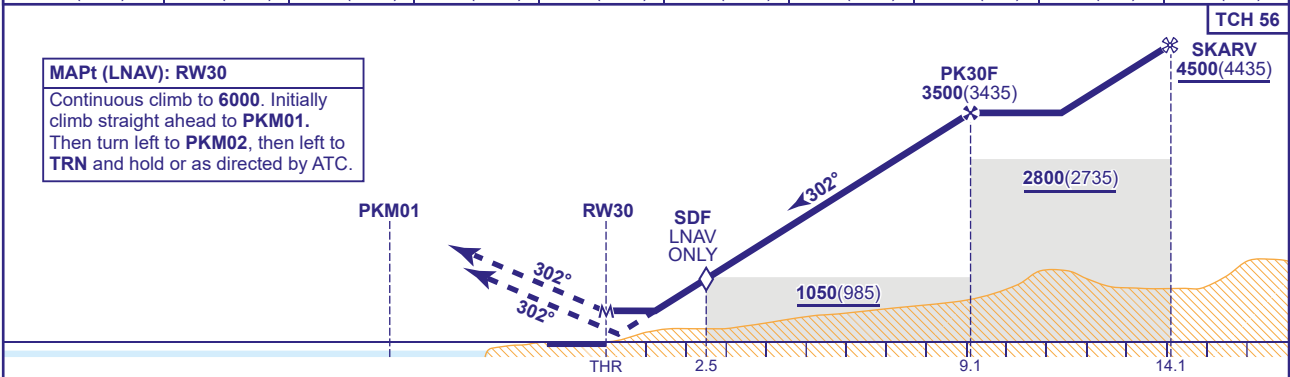
INSTRUMENT APPROACH CHART - ICAO

PRESTWICK
RNP
RWY 30
(ACFT CAT A,B,C,D)

<div>39</div> <div>MSA 25NM ARP</div>	APP 129.450	PRESTWICK APPROACH	AD ELEVATION 65	MIN TEMP -15°C TRANSITION ALTITUDE 6000
	TWR 118.150, 127.155	PRESTWICK TOWER	THR ELEVATION 65	
	RAD 129.450, 124.630	PRESTWICK RADAR	OBSTACLE ELEVATION 2420 AMSL (2355) (ABOVE THR)	
	ATIS 121.130	PRESTWICK INFORMATION	BEARINGS ARE MAGNETIC	



NM to RW30	8	7	6	5	4	3	2.5 SDF	2	1
ALT(HGT)	3090(3025)	2720(2655)	2350(2285)	1980(1915)	1610(1545)	1240(1175)	1050(985)	860(795)	490(425)



Aircraft Category		A	B	C	D	Rate of descent	G/S KT	160	140	120	100	80
OCA (OCH)	LNAV/VNAV	420(355)	420(355)	430(365)	440(375)		FT/MIN	990	870	740	620	500
	LNAV	540(475)	540(475)	540(475)	540(475)							
VM(C)OCA (OCH AAL)	Total Area	750(685)	870(805)	1070(1005)	1070(1005)							
	SW of RWY 12/30	680(615)	810(745)	910(845)	1070(1005)							

NOTE VPA exceeds 3.5° above 15°C.

CHANGE (12/25): TAA HEIGHT INCREASES. MAG VAR. MAG HEADINGS.